



HETEROGENOUS EFFECTS OF COVID-19 PANDEMIC ON LABOUR OUTCOMES IN MALAWI

PRESENTED BY

NORAH MWASE, MA

BACKGROUND

- Countries, including Malawi adopted measures to contain the spread of COVID -19 pandemic.
- Measures implemented in different sectors i.e. transport, education, tourism & retail and wholesale.
- Containment led to negative impact on labour market





Different
sectors that
were affected

OBJECTIVES AND METHODS



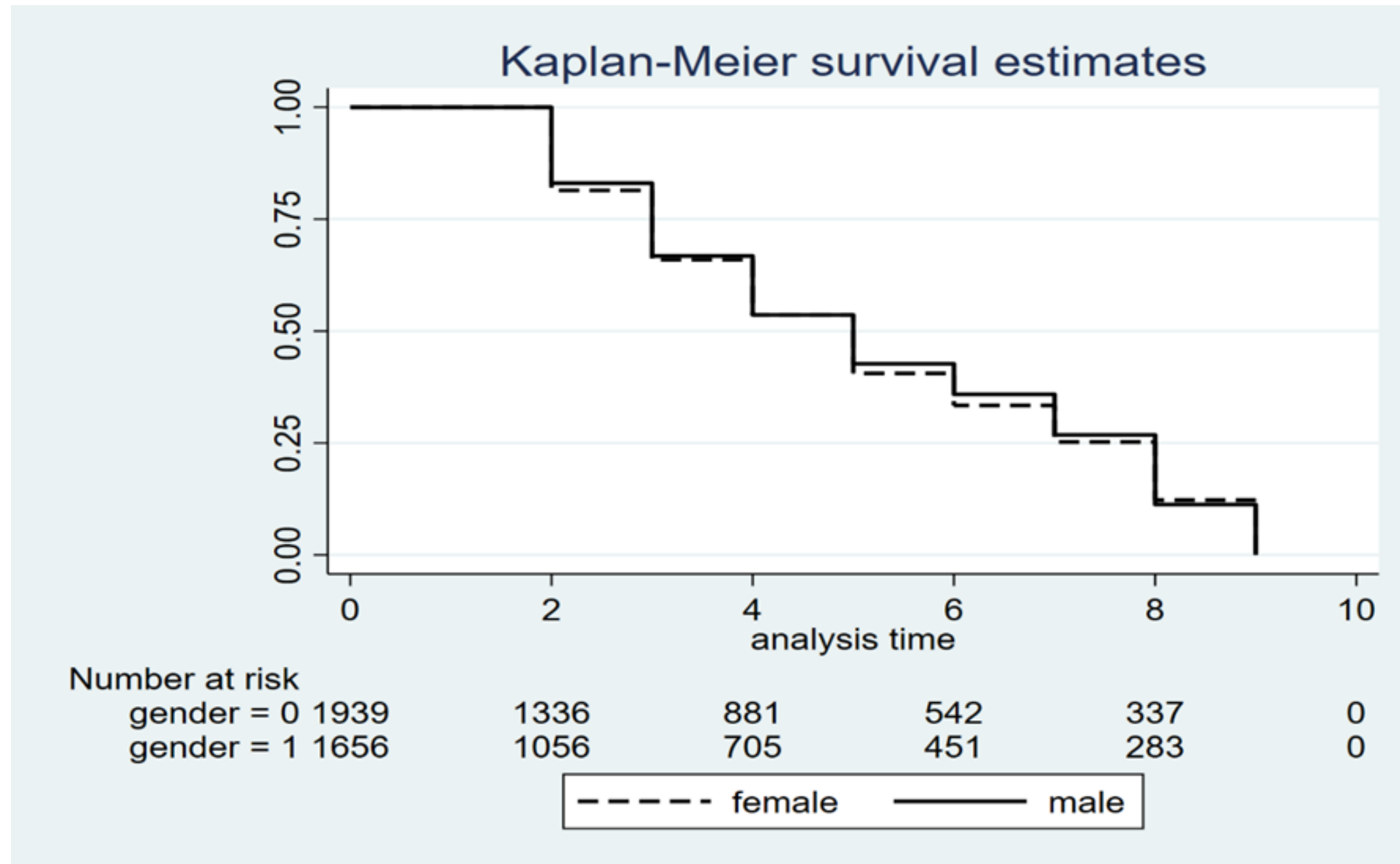
Objective of the study	Determine how different groups have been impacted differently by the COVID-19 pandemic
Relevance of the study	The results can assist in targeting appropriate groups with COVID-19 response interventions
Methods	Panel Model- Survival analysis

METHODOLOGY

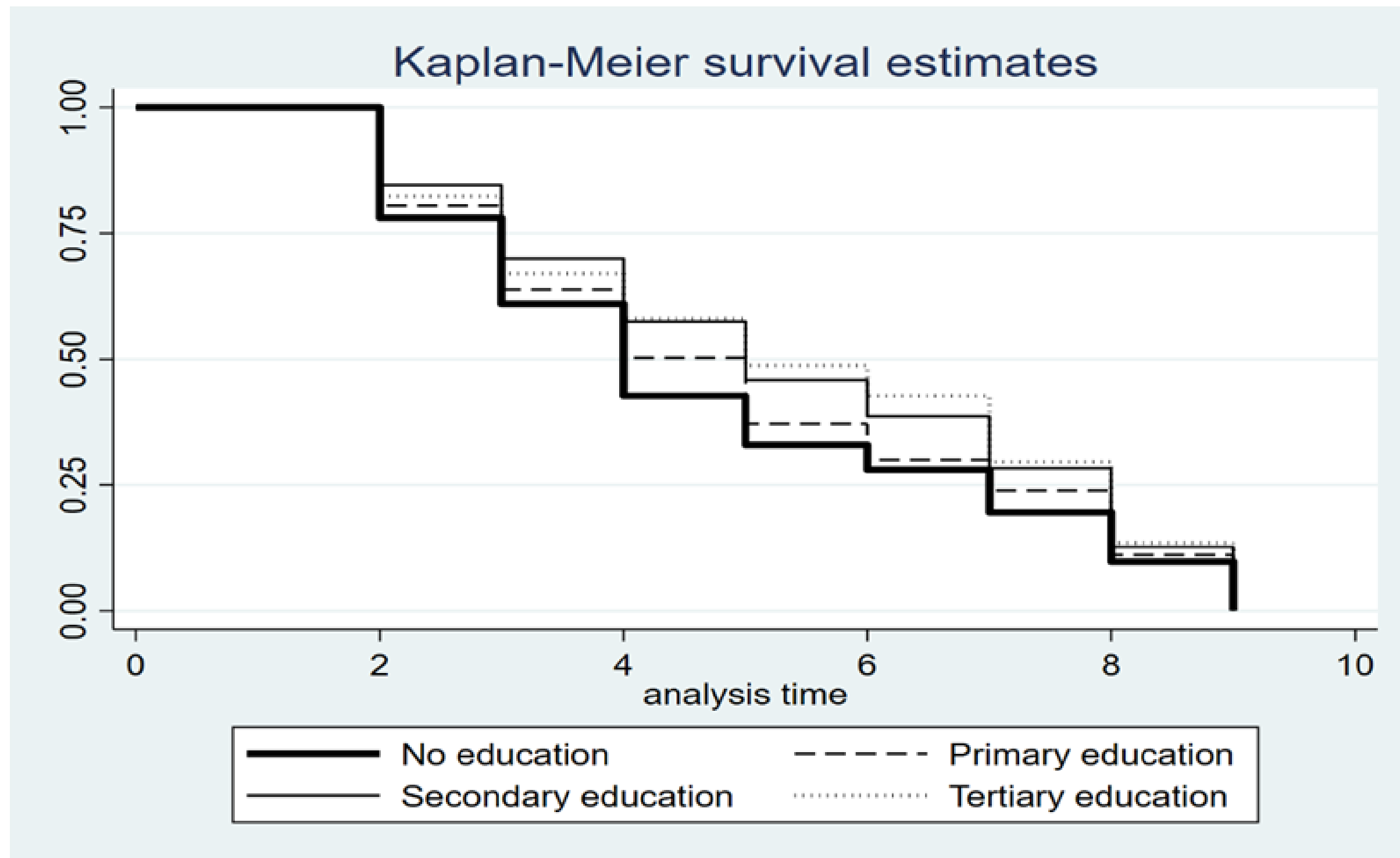
Non-Parametric Models	Semi-Parametric model
<ul style="list-style-type: none">• Includes the Kaplan -Meier Model• The output is Survival rates for all categorical variables	<ul style="list-style-type: none">• Includes the Cox -Proportional Hazard Model• The output is the hazard ratios

RESULTS

By Gender



By Level of Education



Cox-Proportional Hazard Model

Variable	Hazard Ratio
Age	1.001
Gender	0.987**
Level of Education	
Primary	0.870**
Secondary	0.771**
Tertiary	0.748**

* p < 0.10, ** p < 0.05, *** p < 0.01

Cox-Proportional Hazard Model...

Variable	Hazard Ratio
Sector of Employment	
Agriculture	1.135
Retail & Wholesale	1.215**
Transport	1.133
Manufacturing	1.958
Education	1.595**
Health	0.135

* p < 0.10, ** p < 0.05, *** p < 0.01

DISCUSSION

- Age does not influence the labour outcomes
- Women have a higher risk of losing their jobs than men
- Education attainment significantly determines individuals survival in the labour market.
- there are sectoral differences in the risk of job loss i.e education and retail and wholesale sectors.



ACKNOWLEDGEMENTS

PROFESSOR LEVISON CHIWAULA

co-author

INNOCENT MAKUTA

co-author

